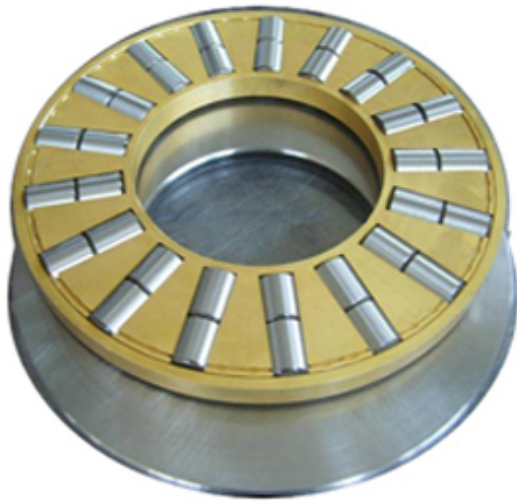




Jinan Guotai Bearing Co., Ltd

T-611 Thrust Ball Bearings



T-611 Bearing 2D drawings and 3D CAD models

Bearing No. T-611

Category	Thrust Roller Bearing
Inventory	0.0
Manufacturer Name	CONSOLIDATED BEARING
Minimum Buy Quantity	N/A
Weight	0.68
Product Group	B04144
Rolling Element	Cylindrical Roller Bearing
Self Aligning	No
Component Description	Roller Assembly plus Raceways
Thrust Bearing	Yes
Single or Double Direction	Single Direction
Banded	No
Cage Material	Machined Bronze
Precision Class	ABEC 1 ISO P0
Other Features	Double Row Housing Side OD 3.169 In
Long Description	1-5/8" Bore 1; 1.681" Bore 2; 3-1/4" Outside Diameter; 1" Height; Cylindrical Roller Bearing; Single Direction; Not Self Aligning; Not Banded; Machined Bronze Cage; ABEC 1 ISO P0
Inch - Metric	Inch
Category	Thrust Roller Bearings
UNSPSC	31171507
Harmonized Tariff Code	8482.50.00.00



Jinan Guotai Bearing Co., Ltd

Noun	Bearing
Keyword 3	Cylindrical
Keyword String	Thrust Roller Cylindrical
Manufacturer URL	http://www.consbrgs.com
Manufacturer Item Number	T-611
Weight / LBS	1.5
Bore 1	1.625 Inch 41.275 Millimeter
D	3.25 Inch 82.55 Millimeter
Bore 2	1.681 Inch 42.697 Millimeter
Height	1 Inch 25.4 Millimeter
Overall Height with Aligning Washer	0 Inch 0 Millimeter