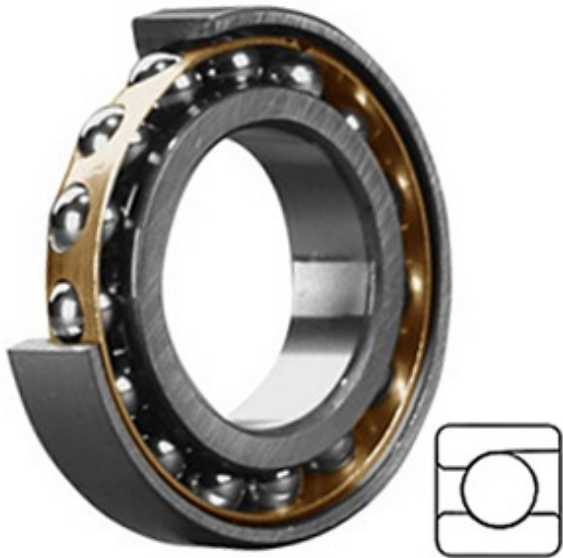




Jinan Guotai Bearing Co., Ltd



718/530 AMB/P5 Bearing 2D drawings and 3D CAD models

20.866 Inch | 530 Millimeter x 25.591 Inch | 650 Millimeter x 2.205 Inch | 56 Millimeter SKF 718/530 AMB/P5 Precision Ball Bearings

Bearing No. 718/530 AMB/P5

Category	Precision Ball Bearings
Inventory	0.0
Manufacturer Name	SKF
Minimum Buy Quantity	N/A
Weight	58.62
EAN	7316576641114
Product Group	B00308
Enclosure	Open
Precision Class	ABEC 5 ISO P5
Material - Ball	Steel
Number of Bearings	1 (Single)
Contact Angle	30 Degree
Preload	None
Raceway Style	1 Rib Outer Ring
Cage Material	Brass
Rolling Element	Ball Bearing
Flush Ground	No
Inch - Metric	Metric
Other Features	Single Row Angular Contact
Long Description	530MM Bore; 650MM Outside Diameter; 56MM Width; Open Enclosure; ABEC 5 ISO P5 Precision; Steel Ball Material; 1 (Single) Bearing; Brass Cage Material; 30 Degree Contact



Jinan Guotai Bearing Co., Ltd

	Angle; 1 Rib Outer Ring Racew
Category	Precision Ball Bearings
UNSPSC	31171531
Harmonized Tariff Code	8482.10.50.28
Noun	Bearing
Keyword String	Ball Angular Contact
Manufacturer URL	http://www.skf.com
Manufacturer Item Number	718/530 AMB/P5
Weight / LBS	126.89
B	2.205 Inch 56 Millimeter
d	20.866 Inch 530 Millimeter
D	25.591 Inch 650 Millimeter
bore diameter:	530 mm
radial static load capacity:	900 kN
outside diameter:	650 mm
outer ring width:	56 mm
overall width:	56 mm
maximum rpm:	1000 RPM
row type & fill slot:	Single-Row Non-Fill Slot
finish/coating:	Uncoated
internal clearance:	C0
precision rating:	Not Rated
closure type:	Open
fillet radius:	2.5 mm
radial dynamic load capacity:	390 kN
series:	71